

Attire18 “Luau” Skirt and Top



Attire18 “Luau” Skirt and Top Instructions

Top:

1. Fold strap pieces in half lengthwise with right sides facing and sew $\frac{1}{4}$ inch seam on long edge only. Trim seam to $\frac{1}{8}$ inch. Turn right side out. Press.
2. Fold back strap in half lengthwise with right sides facing and sew $\frac{1}{4}$ inch seam on long edge only. Press seam open. Turn tube right side and press with the seam in the center of the tube. Insert the 6 inch piece of $\frac{1}{2}$ inch elastic with a safety pin. Hold elastic ends in place with a straight pin.
3. Lay the front piece down right side up. Pin the 2 straps to the top at the red dot markings. Allow the strap pieces to extend about $\frac{1}{4}$ inch above the front piece. Pin the lining in place from one red square marking to the other. Stitch $\frac{1}{4}$ inch seam from red square marking to red square marking making sure to pivot the stitching at the center “V” of the neckline.
4. Insert the back strap with the elastic, lining up the ends with the side seams of the top. Be sure to have the side of the strap without the

seam facing the good side of your top and not toward the lining.
Stitch the side seams.

5. Pin the bottom edge. Sew, leaving about 1 inch opening for turning. Be sure not to catch the back strap or the neck straps in this seam.
6. Clip corners, trim off the small pieces of strap at the top. Clip center "V" of neckline for a clean finish when turned.
7. Turn right side out. Press. Edge stitch the entire bottom edge of the top, closing the opening as you stitch.
8. Try on the top, tie the neck straps, and trim the ends of the neck straps to a point to prevent fraying.

Skirt: 2 fronts are made separately.

1. Fold and press the top edge of skirt back $\frac{1}{4}$ inch. Fold and press another 1 inch. Stitch $\frac{1}{8}$ inch from folded hem edge. Make another 2 lines of stitching $\frac{1}{8}$ and $\frac{1}{2}$ inch from top edge. You now have 2 elastic casings. Insert the two $5\frac{1}{2}$ inch pieces of $\frac{1}{4}$ inch elastic into the openings. Secure the ends with straight pins.
2. Cut 2 pieces of lightweight iron on interfacing $\frac{1}{2}$ x 5 inches. Place these along the center front edges of the skirt. Iron in place. Finish this center front edge with serger or zigzag. Fold center front edge over $\frac{1}{2}$ inch. Press. Sew 2 rows of gathering stitches between the 2 red "X" markings. Use a long stitch.
3. Fold the waistband pieces with short edges together. Press.
4. With right sides facing. Pin the skirt front to waistband matching the side seam and the folded center front of the skirt to the fold in the waistband. Adjust gathers to fit. Stitch at $\frac{1}{4}$ inch.
5. Fold the waistband back on itself with right sides facing and stitch top edge at $\frac{1}{4}$ inch. Turn right side out. On inside of skirt, fold waistband up $\frac{1}{4}$ inch. Pin in place, just covering the stitching line where the waistband was attached to skirt. Stitch from the front all around the waistband about $\frac{1}{8}$ inch.
6. Stitch front to back at side seams. Trim and finish seams.
7. Hem skirt by folding $\frac{1}{4}$ inch twice, and stitching in place
8. Overlap the fronts of the skirt $\frac{1}{2}$ inch. Sew 5 small buttons through all layers. If you wish, you could also make working buttonholes down one side and sew the buttons to correspond to the opposite front. The skirt goes on easily due to the back elastic so it is not required to open at the front.

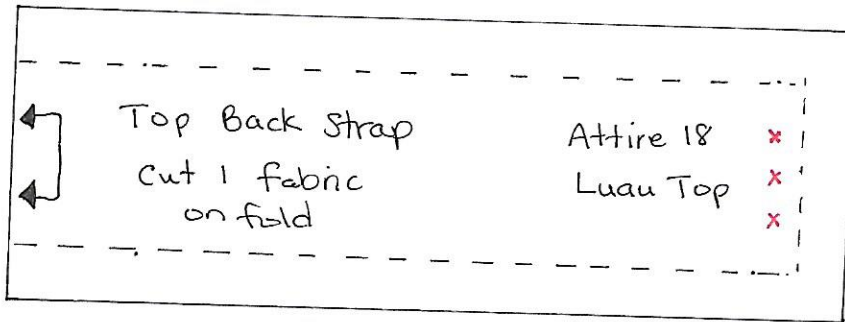
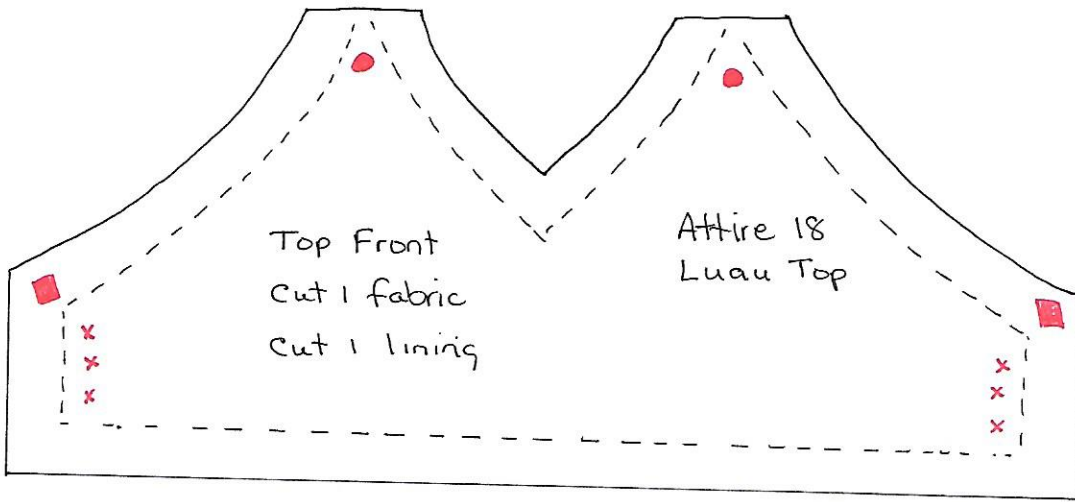
Grass Skirt:

I used a dollar store child's grass skirt. I picked apart the waistband. Cut it 11 ½ at the elastic waist edge. Stitch together. I then trimmed the skirt to 7 inches in length. This was easily accomplished with the rotary cutter, but you could just trim with scissors. 1 child's grass skirt will make 2 doll grass skirts.

Lei:

For this I used a dollar store lei. Buy one that has flowers with 5 round petals. I then cut 5 small circles from each of the flowers and roughly cut them to small flower shapes. The plastic straw like pieces were also cut to about ¼ inch.

I then strung the lei using elastic thread—*2 flowers + 1 plastic piece, repeat till desired length that will go over the doll's head. Tie off the ends and secure with a touch of glue



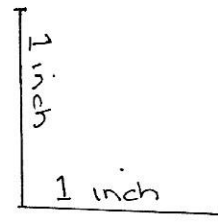
Attire 18 Luau Top

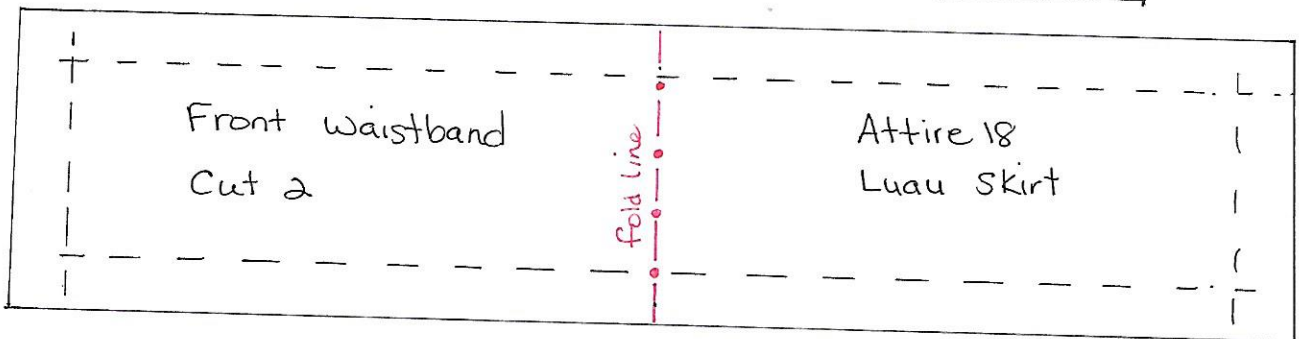
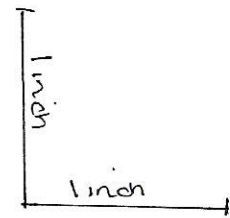
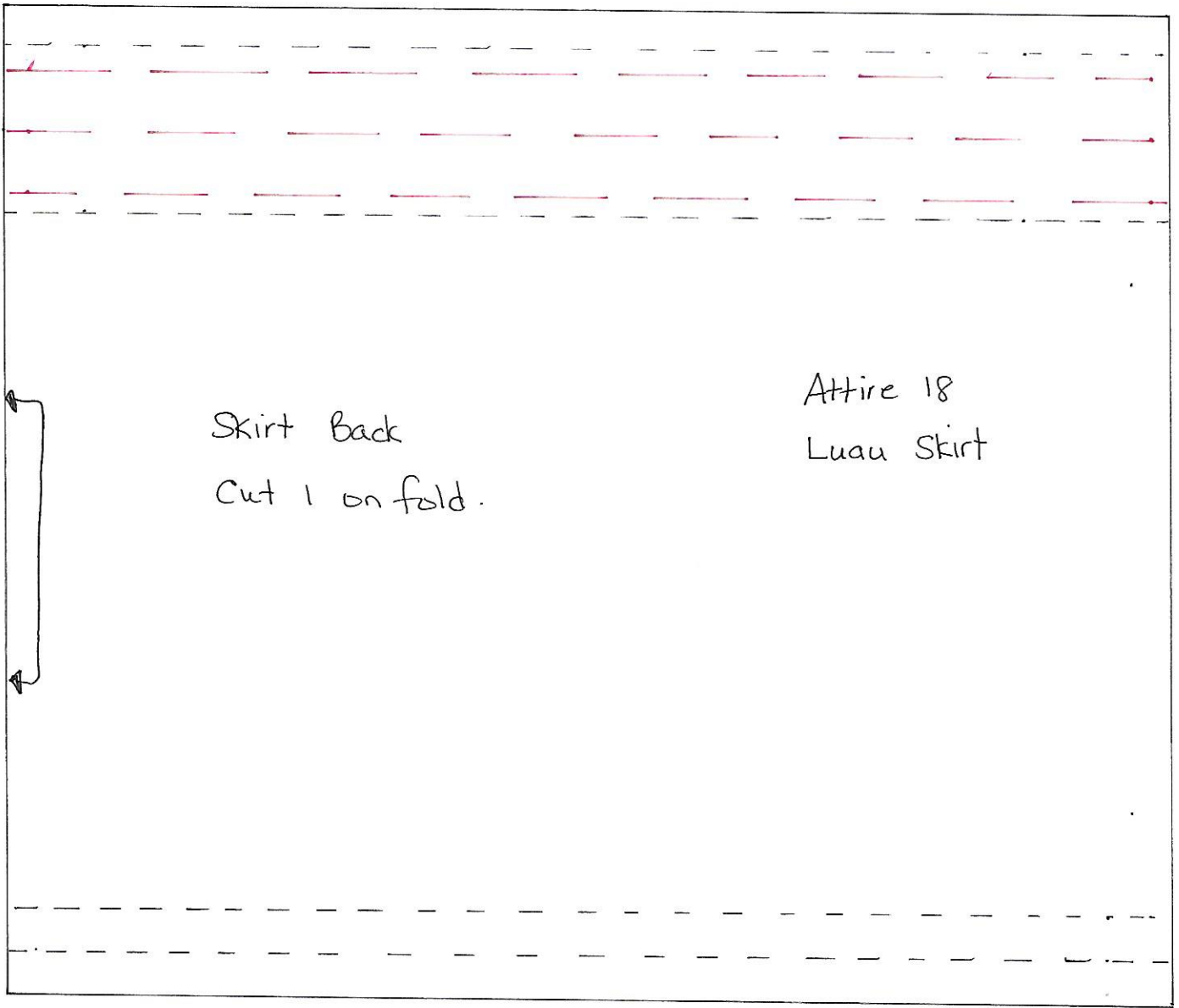
Straps -

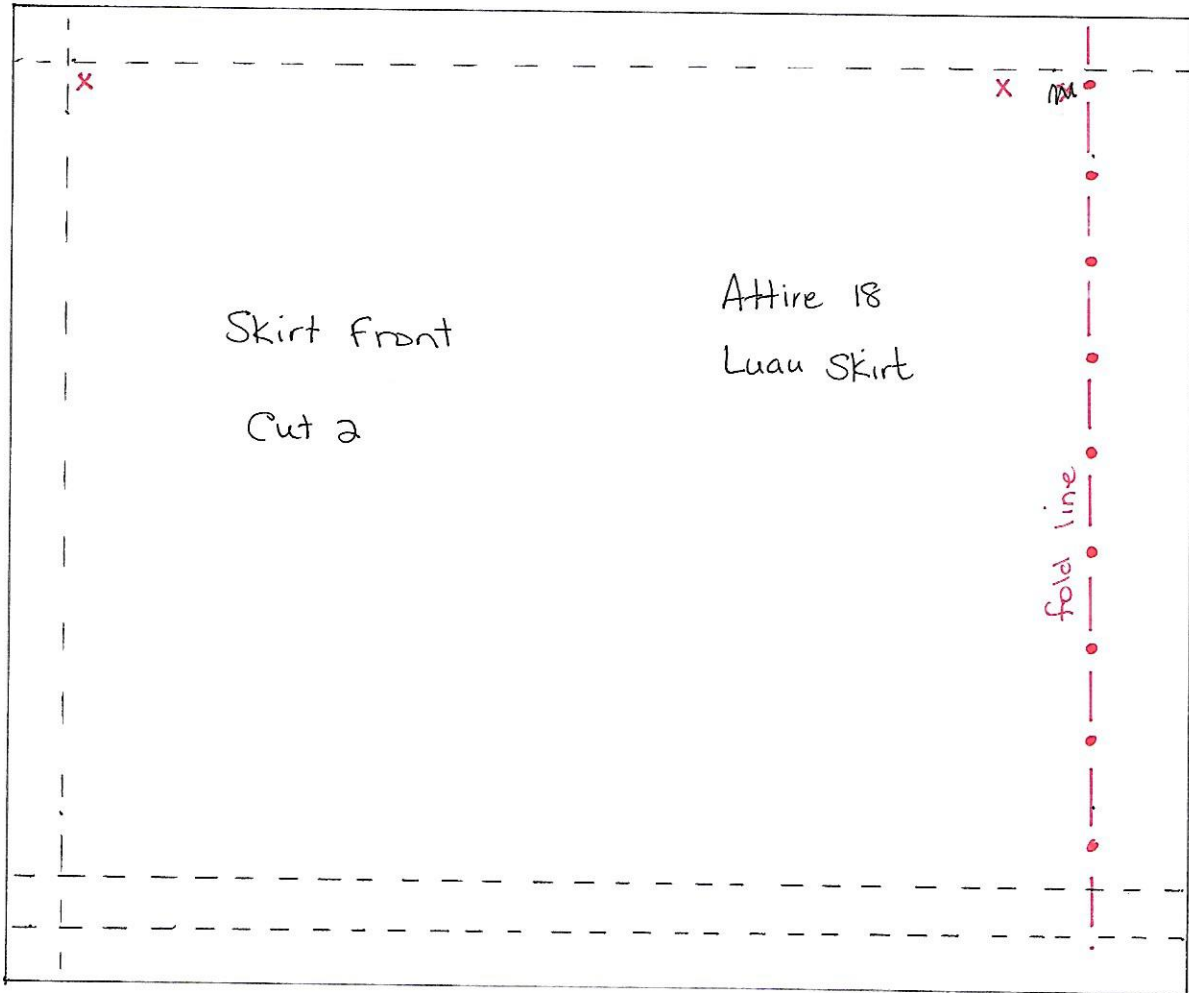
Cut 2

1 inch x 20 inches

* can substitute 1/4" ribbon







Elastic Measurements:

$\frac{1}{2}$ inch - cut 1 6 inches

$\frac{1}{4}$ inch - cut 2 $5\frac{1}{2}$ inches

